

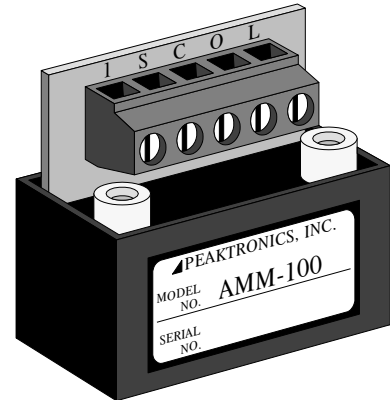
▲ PEAKTRONICS

AMM-100

Auto/Manual Module

The Peaktronics AMM-100 Auto/Manual Module is specifically designed to provide the switch multiplexing resistors used to interface auto/manual station switches to the Override Input on a Peaktronics DHC Series controller. The module is a compact encapsulated package with two mounting holes (mounting screws are included) and screw terminals that provide for easy installation and wiring.

Using an AMM-100 with a DHC Series controller, virtually any type of switches (momentary or toggle) can be used to provide an auto/manual station for remote control of an actuator equipped with a DHC controller. By mounting the AMM-100 in the switch enclosure, the connection to the DHC controller only requires two wires (see application diagrams for more details). Since the DHC controller's Override Input is a digital connection (5VDC maximum and 1mA maximum), the AMM-100 and the auto/manual switches are isolated from the actuator motor and power source, providing a safe low voltage electrical connection to the auto/manual switches.



SPECIFICATIONS

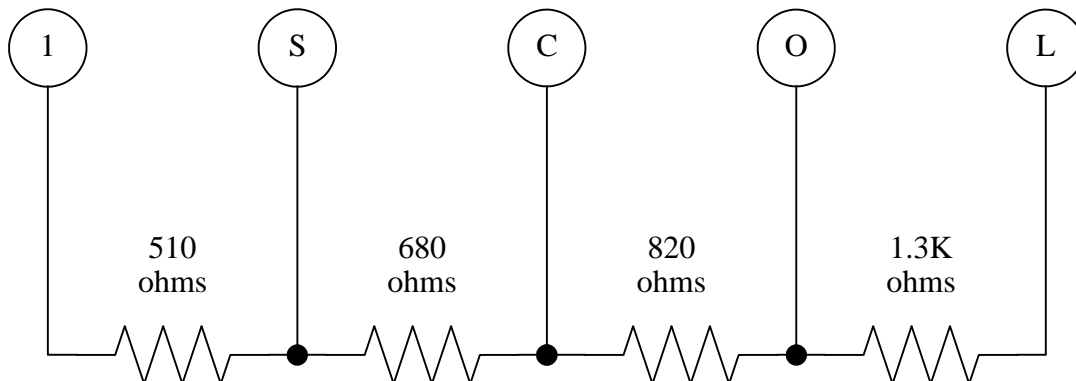
ENVIRONMENTAL

Operating Temperature: 0 to 60 °C
Storage Temperature: -40 to 85 °C
Relative Humidity: 0 to 90 % (non-condensing)

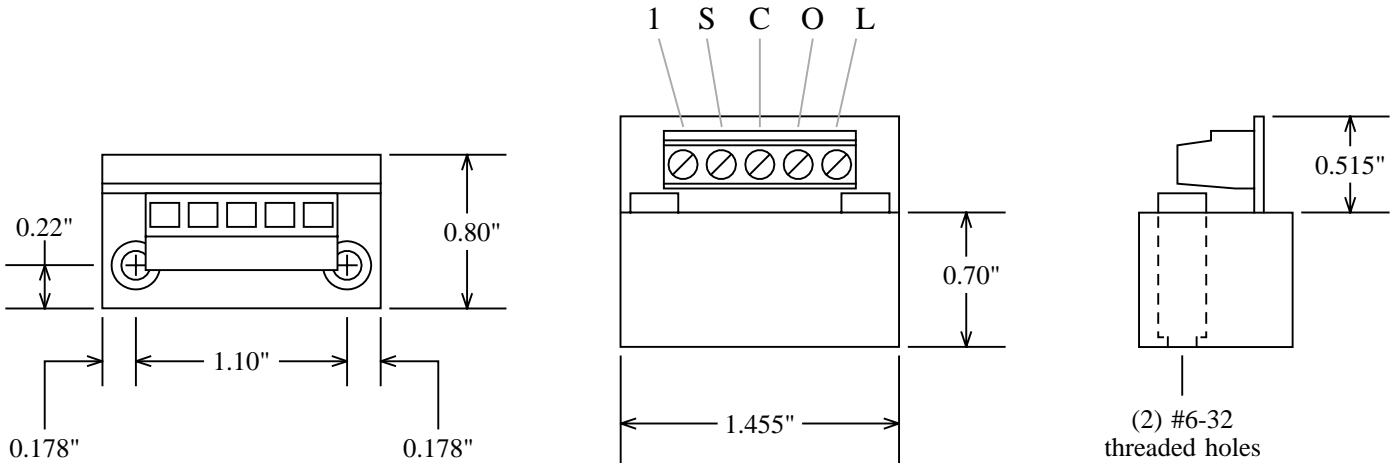
CE CERTIFICATION

EN55011 (Class A RF Emission)
EN61000-4-2, EN61000-4-3, EN61000-4-4
EN61000-4-5, EN61000-4-6, EN61000-4-11
Peaktronics reference document: 1001-6A

SCHEMATIC

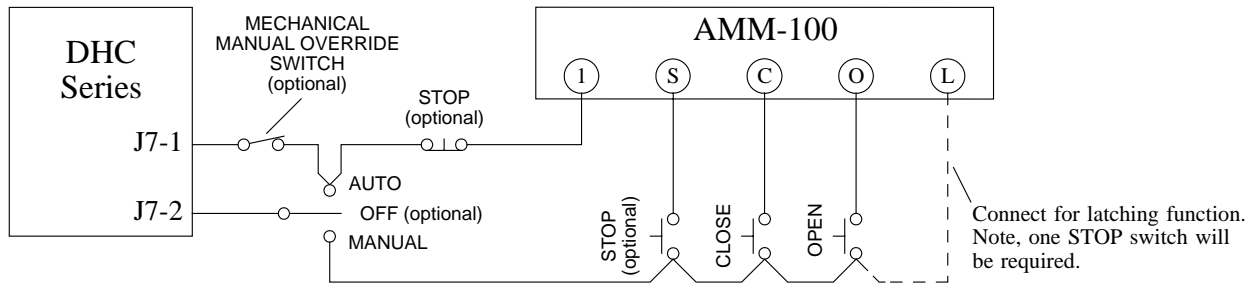


OUTLINE



TYPICAL APPLICATION

Auto/Manual Station using momentary switches



TYPICAL APPLICATION

Auto/Manual Station using toggle switches

